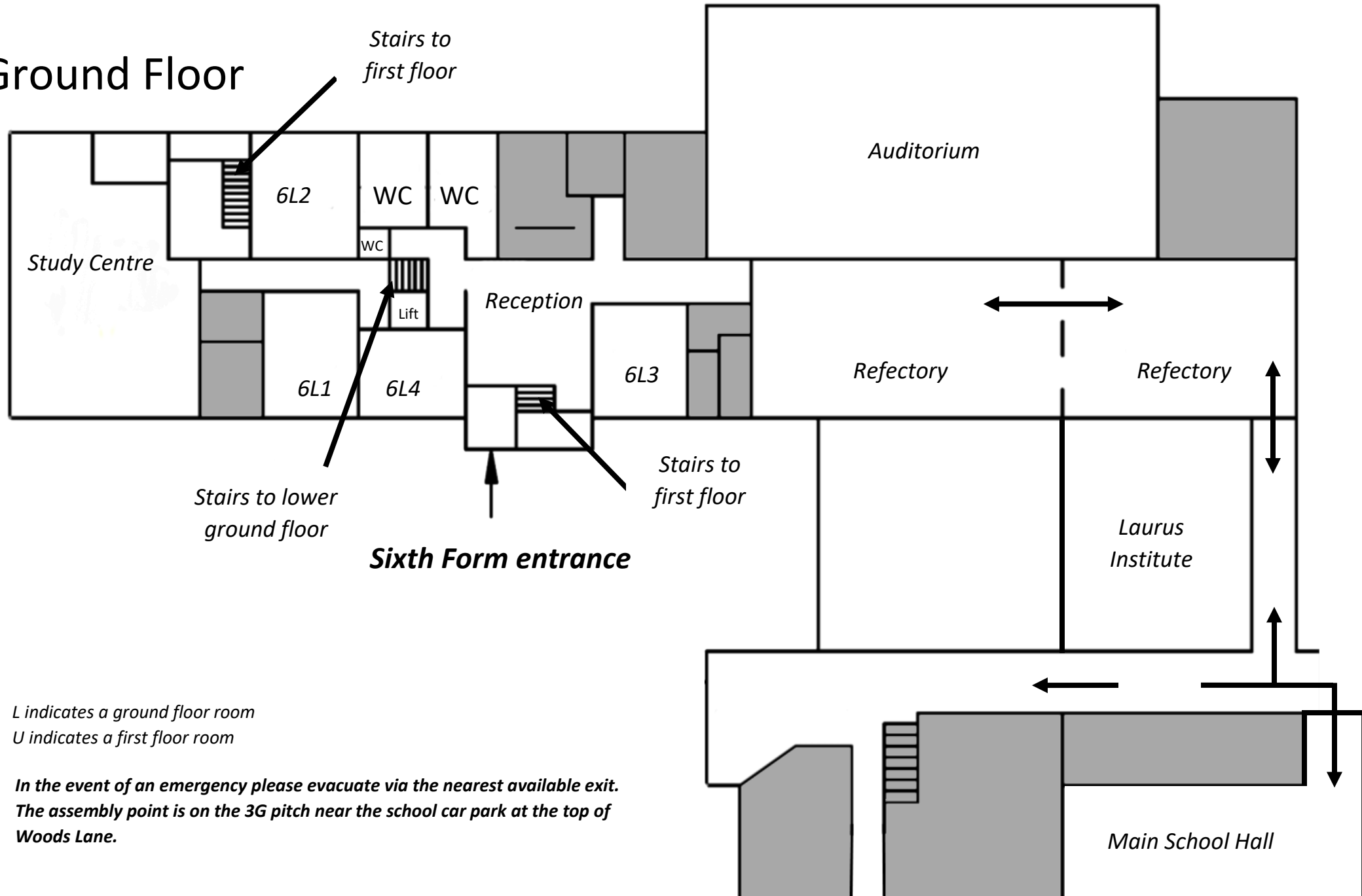


Subject Seminar Presentations

Subject	Room	Floor	Arrival 6.00 – 6.20pm	Seminar 1 6.20 – 6.40pm	Seminar 2 6.40 – 7.00pm	Seminar 3 7.00 – 7.20pm	Seminar 4 7.20 – 7.40pm	Seminar 5 7.40 – 8.00pm	Seminar 6 8.00 – 8.20pm	Seminar 7 8.20 – 8.40pm
Presentation from Director of Sixth Form	6AUD	G	✓			✓		✓		
Art and Design	6U4	1		✓		✓		✓		
Biology	6U7	1			✓	✓	✓	✓	✓	✓
Chemistry	6U8	1		✓	✓	✓	✓	✓	✓	
Computer Science	6U3	1		✓		✓		✓		
D & T: Product Design	6U6	1		✓		✓		✓		
Drama and Theatre	6L4	G		✓		✓		✓		✓
Economics	6L1	G			✓	✓	✓		✓	✓
English Language	6L3	G			✓		✓		✓	
English Literature	6L3	G		✓		✓		✓		
Geography	6U1/2	1		✓		✓		✓		✓
History	6U1/2	1			✓		✓		✓	
Law	6L2	G		✓	✓		✓	✓	✓	
Mathematics/ Further Mathematics	Main Hall	G		✓		✓		✓		✓
Mathematics (Core)	6U3	1			✓		✓		✓	✓
Media Studies	6U6	1			✓		✓		✓	
Modern Foreign Languages	6U5	1		✓		✓		✓		✓
Music	6L4	G			✓		✓		✓	
Photography	6U4	1			✓		✓		✓	
Physical Education	Laurus Institute	G		✓			✓			
Physics	Main Hall	G			✓		✓		✓	
Psychology	Laurus Institute	G		✓	✓		✓	✓	✓	
Presentation from Sixth Form Student Cabinet	Study Centre	G		✓		✓		✓		
Cabinet and Student Drop-in Session	Study Centre	G	✓	✓		✓		✓	✓	

Ground Floor

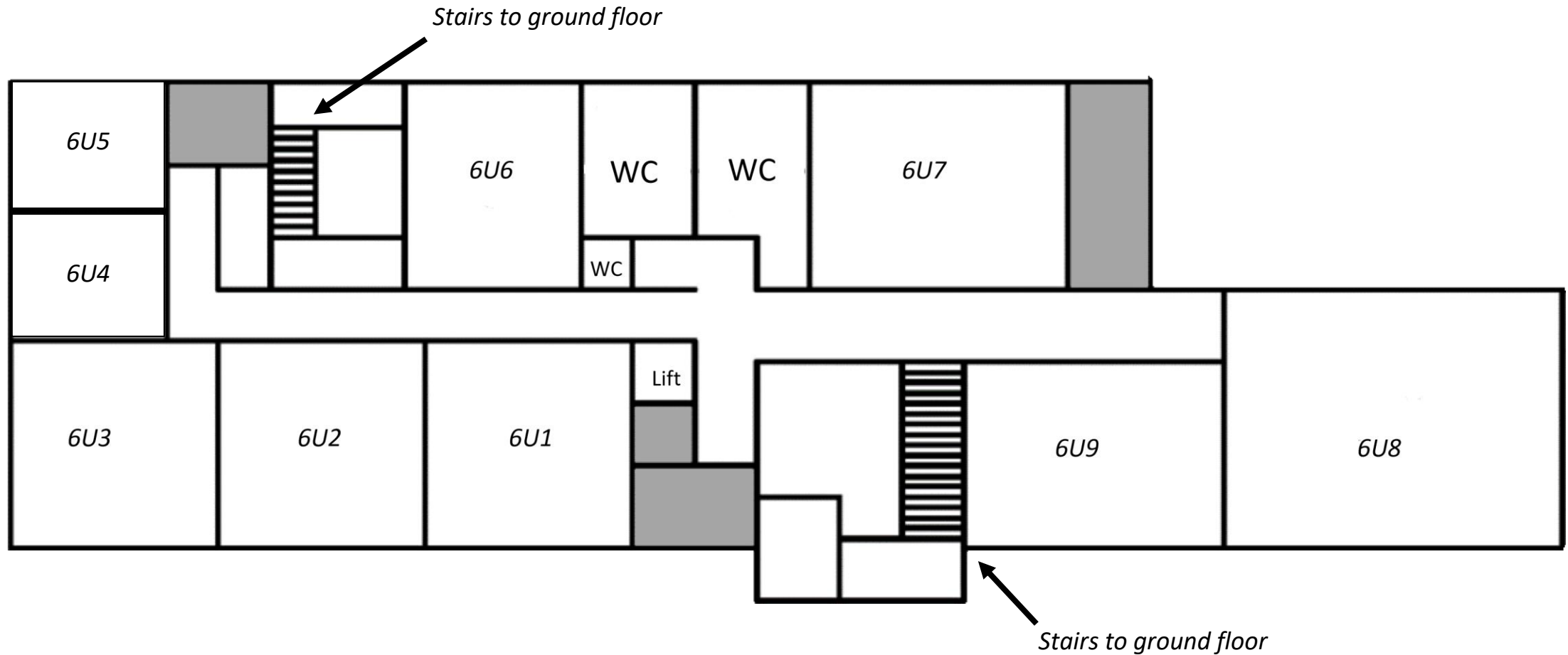


**CHEADLE
HULME**
SIXTH FORM

*L indicates a ground floor room
U indicates a first floor room*

***In the event of an emergency please evacuate via the nearest available exit.
The assembly point is on the 3G pitch near the school car park at the top of
Woods Lane.***

First Floor



*L indicates a ground floor room
U indicates a first floor room*

***In the event of an emergency please evacuate via the nearest available exit.
The assembly point is on the 3G pitch near the school car park at the top of
Woods Lane.***